



**BELTEX**  
**COMPANY**

ABSORBENT PRODUCTS

◆◆ *Since 1956* ◆◆

**BELTEXCOMPANY.COM**



# OIL ONLY

Highly absorbent meltblown polypropylene, these products absorb oil and other hydro-carbon based fluids and repel water.

PART NUMBER	SIZE & TYPE	CASE COUNT	THICKNESS	ABSORB CAPACITY (gallons)
<b>DIMPLED MELTBLOWN POLYPROPYLENE - 1 ply</b>				
1PDBH	15"x18" PAD	100	heavy	31
1PDBS	15"x18" PAD	200	single	34
1MTBH	30"x36" PAD	50	heavy	62
1PDBE	15"x18" PAD	100	medium	26
1RLBH	30"x150' ROLL	1	heavy	62
1SRBH	15"x150' ROLL	2	heavy	62
1RLBE	30"x150' ROLL	1	medium	52
1SRBE	15"x150' ROLL	2	medium	52
1RLBS	30"x300' ROLL	1	single	68
1SRBS	15"x300' ROLL	2	single	68
<b>FMF (FINE FIBER / MELTBLOWN / FINE FIBER) - 3 ply</b>				
1PDFMFH	15"x18" PAD	100	heavy	31
1PDFMFE	15"x18" PAD	100	medium	26
1RLFMFH	30"x150' ROLL	1	heavy	62
1SRFMFH	15"x150' ROLL	2	heavy	62
1RLFMFE	30"x150' ROLL	1	medium	52
1SRFMFE	15"x150' ROLL	2	medium	52
<b>SMS (SPUNBOND / MELTBLOWN / SPUNBOND) - 3 ply</b>				
1PDSMSH	15"x18" PAD	100	heavy	31
1PDSMSE	15"x18" PAD	100	medium	26
1RLSMSH	30"x150' ROLL	1	heavy	62
1SRSMSH	30"x150' ROLL	2	heavy	62
1RLSMSE	30"x150' ROLL	1	medium	52
1SRSMSE	15"x150' ROLL	2	medium	52
<b>SOCKS - PILLOWS - DRUM TOPPERS</b>				
1SK483	3" x 48" SOCK	30	n/a	30
1SK963	3" x 96" SOCK	15	n/a	30
1SK123	3" x 144" SOCK	10	n/a	30
1PL1818	18"x18" PILLOW	16	n/a	28
1PL915	9"x15" PILLOW	16	n/a	17
1PL1824	18"x24" PILLOW	15	n/a	30
1DTH	22"x22" DRUM TOPPER	25	n/a	11
1TRI	5"x50' TRI-FOLD ROLL	1	heavy	n/a





# OIL ONLY (MARINE)

Engineered to specifically contain  
and remove oil from water.



PART NUMBER	SIZE & TYPE	CASE COUNT	THICKNESS	ABSORB CAPACITY (gallons)
<b>STANDARD MELTBLOWN POLYPROPYLENE - 1 ply</b>				
1PDMH	15"x18" PAD	100	heavy	31
1PDMS	15"x18" PAD	200	single	34
1MTH	30"x36" PAD	50	heavy	62
1PDME	15"x18" PAD	100	medium	26
1RLMH	30"x150' ROLL	1	heavy	62
1SRMH	15"x150' ROLL	2	heavy	62
1RLME	30"x150' ROLL	1	medium	52
1SRME	15"x150' ROLL	2	medium	52
1RLMS	30"x300' ROLL	1	single	68
1SRMS	15"x300' ROLL	2	single	68

## BOOMS AND SWEEPS

1BO105	5"x10' BOOM	4	n/a	30
1BO205	5"x20' BOOM	2	n/a	30
1BO108	8"x10' BOOM	4	n/a	60
1BO208	8"x20' BOOM	2	n/a	60
1BP	8"x18" BOOM PILLOW	10	n/a	45
1BB	5"x18" BILGE BOOM	10	n/a	23
1SW	19"x100" SWEEP	1	n/a	15

We guarantee every product we sell.



# UNIVERSAL

Treated melt blown polypropylene absorbs all types of fluids.  
Standard gray color hides stains and spills.

PART NUMBER	SIZE & TYPE	CASE COUNT	THICKNESS	ABSORB CAPACITY (gallons)
<b>DIMPLED MELTBLOWN POLYPROPYLENE - 1 ply</b>				
2PDBH	15"x18" PAD	100	heavy	28
2PDBE	15"x18" PAD	100	medium	23
2PDBS	15"x18" PAD	200	single	30
2MTBH	30"x36" PAD	50	heavy	55
2RLBH	30"x150' ROLL	1	heavy	55
2SRBH	15"x150' ROLL	2	heavy	55
2RLBE	30"x150' ROLL	1	medium	46
2SRBE	15"x150' ROLL	2	medium	46
2RLBS	30"x300' ROLL	1	single	60
2SRBS	15"x300' ROLL	2	single	60
<b>FMF (FINE FIBER / MELTBLOWN / FINE FIBER) - 3 ply</b>				
2PDFMFH	15"x18" PAD	100	heavy	28
2PDFMFE	15"x18" PAD	100	medium	23
2RLFMFH	30"x150' ROLL	1	heavy	55
2SRFMFH	15"x150' ROLL	2	heavy	55
2RLFMFE	30"x150' ROLL	1	medium	46
2SRFMFE	15"x150' ROLL	2	medium	46
<b>SMS (SPUNBOND / MELTBLOWN / SPUNBOND) - 3 ply</b>				
2PDSMSH	15"x18" PAD	100	heavy	28
2PDSMSE	15"x18" PAD	100	medium	23
2RLSMH	30"x150' ROLL	1	heavy	55
2SRSMH	15"x150' ROLL	2	heavy	55
2RLSMSE	30"x150' ROLL	1	medium	46
2SRSMSE	15"x150' ROLL	2	medium	46
<b>SOCKS - PILLOWS - DRUM TOPPERS</b>				
2SK483	3" x 48" SOCK	30	n/a	30
2SK943	3" x 96" SOCK	15	n/a	30
2SK123	3" x 144" SOCK	10	n/a	30
2PL1818	18"x18" PILLOW	16	n/a	28
2PL915	9"x 15" PILLOW	16	n/a	17
2PL1824	18"x24" PILLOW	15	n/a	30
2DTH	22"x22" DRUM TOPPER	25	n/a	10
2TRI	5"x50' TRI-FOLD ROLL	1	heavy	n/a





# HAZMAT

Manufactured for use with hazardous materials.



<b>PART NUMBER</b>	<b>SIZE &amp; TYPE</b>	<b>CASE COUNT</b>	<b>THICKNESS</b>	<b>ABSORB CAPACITY (gallons)</b>
<b>FMF (FINE FIBER / MELTBLOWN / FINE FIBER) - 3 ply</b>				
3PDFMFH	15"x18" PAD	100	heavy	28
3PDFMFE	15"x18" PAD	100	medium	23
3RLFMFH	30"x150' ROLL	1	heavy	55
3SRFMFH	15"x150' ROLL	2	heavy	55
3RLFMFE	30"x150' ROLL	1	medium	46
3SRFMFE	15"x150' ROLL	2	medium	46
<b>SOCKS - PILLOWS - DRUM TOPPERS</b>				
3SK483	3" x 48" SOCK	30	n/a	30
3SK963	3" x 96" SOCK	15	n/a	30
3PL1818	18"x18" PILLOW	16	n/a	28
3PL915	9"x15" PILLOW	16	n/a	17
3PL1824	18"x24" PILLOW	15	n/a	30
3DTH	22"x22" DRUM TOPPER	25	n/a	10

## SPECIALTY ROLLS, RUGS & MATS

<b>PART NUMBER</b>	<b>SIZE &amp; DESCRIPTION</b>
RR36	36"x150' Sorbent rag rug roll. Made from 100% recycled fiber.
RR18	18"x150' Sorbent rag rug roll. Made from 100% recycled fiber.
S36300	36"x300' Sorbent needle punch polypropylene roll.
S18300	18"x300' Sorbent needle punch polypropylene roll.
S36150	36"x150' Sorbent needle punch polypropylene roll. Heavy Duty
S18150	18"x150' Sorbent needle punch polypropylene roll. Heavy Duty
1RR57	57"x100' Railroad track mat. Oil only with non-permeable backing.
1RR19	19"x100' Railroad track mat. Oil only with non-permeable backing.
FloorSaveR	36"x100' Sorbent rug with polyethylene barrier and adhesive backing.
FloorSaverMT	35"x47" Sorbent mat with polyethylene barrier and adhesive backing.
BoothsaveR	36"x100' Sorbent rug with latex barrier and adhesive backing.
4RLSMFH	30"x150' Heavyweight, 3 Ply, Universal roll with camouflage print.
4SRSMFH	15"x150' Heavyweight, 3 Ply, Universal roll with camouflage print.

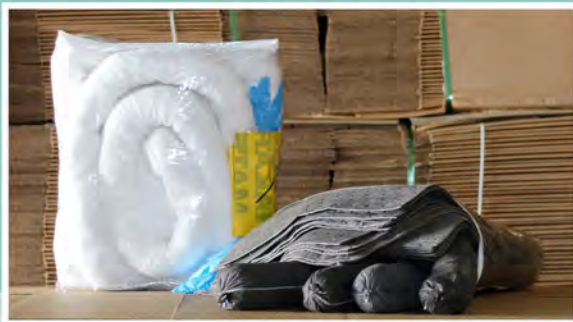


# SPILL KITS

A combination of sorbent, containment and disposal products create a convenient all in one solution for spills.

<i>SPILL KIT SIZE</i>	<i>OIL ONLY PART #</i>	<i>UNIVERSAL PART #</i>	<i>HAZMAT PART #</i>
<b>Truck</b>	<b>1SKTRK</b>	<b>2SKTRK</b>	<b>3SKTRK</b>
Zip bag w/10 pads, 3-3"x4' socks, 1-disposable bag w/tie, 1 pair nitrile gloves, Emergency Guidebook			
<b>5 gallon bucket</b>	<b>1SK5</b>	<b>2SK5</b>	<b>3SK5</b>
10 pads, 3-3"x4' socks, 1-disposable bag w/tie, 1 pair nitrile gloves, Emergency Guidebook			
<b>20 gallon drum</b>	<b>1SK20</b>	<b>2SK20</b>	<b>3SK20</b>
15 pads, 4-3"x4' socks, 1-3"x12' socks, 2- 18"x18" pillows, 3 bags w/ties, 1 pair nitrile gloves, Emergency Guidebook			
<b>30 gallon drum</b>	<b>1SK30</b>	<b>2SK30</b>	<b>3SK20</b>
25 pads, 4-3"x4' socks, 4 18x18 pillows, 3-bags w/ties, 1 pair nitrile gloves, Emergency Guidebook			
<b>50 gallon drum</b>	<b>1SK50</b>	<b>2SK50</b>	<b>3SK50</b>
100 pads, 4-3"x4' socks, 1-3"x12' socks, 2-18"x18" pillows, 3-bags w/ties, 1 pair nitrile gloves, Emergency Guidebook			
<b>55 gallon drum</b>	<b>1SK55</b>	<b>2SK55</b>	<b>3SK55</b>
100 pads, 4-3"x4' socks, 1-3"x12' socks, 2-18"x18" pillows, 3-bags w/ties, 1 pair nitrile gloves, Emergency Guidebook			
<b>65 gallon drum</b>	<b>1SK65</b>	<b>2SK65</b>	<b>3SK65</b>
50 pads, 20-3"x4' socks, 5-3"x10' socks, 6-18"x18" pillows, 3 bags w/ties, 1 pair nitrile gloves, Emergency Guidebook			
<b>95 gallon drum</b>	<b>1SK95</b>	<b>2SK95</b>	<b>3SK95</b>
100 pads, 12-3"x4' socks, 8-3"x12' socks, 8-18"x18" pillows, 3 bags w/ties, 1 pair nitrile gloves, Emergency Guidebook			

\*\*\*Refills available upon request.



Our direct sourcing relationships have ensured the best quality and exceptional value in industrial textiles. We maintain a broad and deep inventory in our warehouses, ready to satisfy customer needs on an immediate basis. We partner with customers to identify specific needs and provide specialized solutions.